

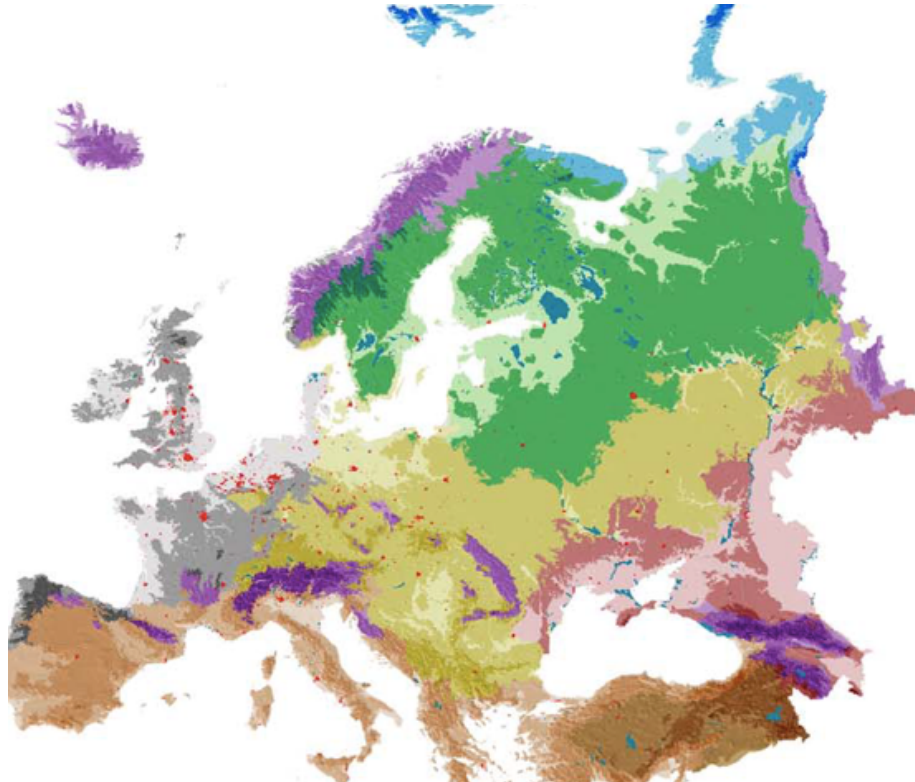


IFLA EUROPE
INTERNATIONAL FEDERATION
OF LANDSCAPE ARCHITECTS

EUROPEAN REGION OF THE INTERNATIONAL FEDERATION OF LANDSCAPE ARCHITECTS

IFLA EUROPE

Report for IFLA World Council 2020



EUROPEAN REGION OF THE INTERNATIONAL FEDERATION OF LANDSCAPE ARCHITECTS

IFLA EUROPE

Report for IFLA World Council 2020

HELLO from Oslo Norway

*Karin Helms Landscape Architect , President IFLA EUROPE
Professor Dr at AHO*



***Souvenir from IFLA's World congress 2019 and
from President of NLA Rainer Stange***



SUMMARY

1. **NEW ExCO IFLA Europe** November 2019 – A Resolution
2. **IFLA EUROPE – CoE** - Celebration
3. **IFLA EUROPE VISION and MISSION**
4. **ACTION URGES**
5. **IFLA EUROPE Visibility** of the profession at EU level
6. **Regulated profession?**
7. **Landscape Architect Education**
8. **To Enable actions...** Structure
9. **IFLA EUROPE- IFLA WORLD** common actions
10. **Communication**

IFLA Europe - Facts

IFLA Europe is formed by **34 professional National Associations**,
Part of Council of Europe (26 of which are in EU)

The Federation has **17 902** members practising in a very wide range of activities

IFLA EUROPE School Recognition Panel (SRP),

IFLA Europe accreditation covers **108** schools in Europe and a total of **230** programs at Bachelor and Master level.

1. NEW ExCO November 2019

IFLA Europe ExCO

Karin Helms, President (FFP, France); Urszula Forczek-Brataniec, Secretary General (SAK, Poland); Katerina Gkoltsiou, VP Professional Practice (PHALA, Greece); Margarida Cancela d'Abreu (Portugal) VP Education Hermann Darija Perkovic VP Communication (CALA Croatia); George Gunnlaugsson Treasurer, (FILA Iceland) Daniela Micanovic, IFLA Europe Executive Secretary (Belgium) Andrée Colin Finance advisor



GA NOVEMBER 2019

30th Jubilee IFLA Europe General Assembly

'Landscape as a collective memory' 6-10 November 2019

hosted by the

7th Congress of CTLA Antalya Turkey

Resolution signed November 2019

LANDSCAPES AND SHARED MEMORIES

Landscape Architecture, its practice and theories, in urban, peri-urban, rural and wilderness environments constantly interact with social, cultural, and political dynamics. Where the interaction of people and their surroundings is realised this interaction becomes a memory. This memory contributes to social identity; influencing the behaviour of individuals and communities over time and provides an important link with the past that can also define the present and the future.

The undersigned, as representatives of the 34 National Associations of the European Region of the International Federation of Landscape Architects, having considered Landscape and Memories at our General Assembly in Antalya, Turkey, 2019 make the following statements:

WE BELIEVE

Landscape architects

have the training, experience and expertise to recognise the importance of memories in the perception, planning and management of landscapes, realising the importance of memories for people's health and well-being.

Landscape architects

act, to enable people and communities to remember, cherish, activate and develop their memories in relation with their landscapes.

WE URGE

the Council of Europe, the European Union, the Commission Expert Group on Cultural Heritage, European Heritage Alliance 3.3 and the IFLA Member states to include within comprehensive landscape strategies and other sectoral policies attention to the role of memories in landscape development, protection, and management so as to:

Respond to the public's wish to enjoy high quality landscapes and to play an active part in the development of landscapes; believing that the landscape is a key element of individual and social well-being and that its protection, management and planning entail rights and responsibilities for everyone;

Ensure that each society undertakes to identify its own landscapes and connected memories noting changes and assess the landscapes thus identified, taking into account the particular material and immaterial values assigned to them by interested parties and the population concerned.

2) Celebration IFLA Europe CoE Council of Europe

2020 in October will be the 20 years anniversary of the European Landscape Convention , we will celebrate this during our GA the 17th of October On-line

European Landscape Convention.



© Anna Om, Winter mountain landscape, a beautiful view of mountains covered in snow, ice cold, the beauty of Icelandic nature, Shutterstock



Iceland becomes the 40th State Party to the European Landscape Convention. The Permanent Representation of Iceland transmitted to the Secretary General of the Council of Europe the instrument of ratification of the [European Landscape Convention \(ETS 176\)](#) on Wednesday 11 December 2019.

IFLA Europe – CoE

Recognition of the Profession at Council of Europe Level in line with the European Landscape Convention

Council of Europe

Steering Committee for Culture, Heritage and Landscape (CDCPP) prepared a report on ‘Professional recognition of Landscape architects’.

unanimously passed at the **Conference of the European Landscape Convention** in May 2019 and a Statement of the Conference was issued which

a) ***“encourages the State Parties to the European Landscape Convention: to formally recognise the profession of landscape architects at national and international level***

....

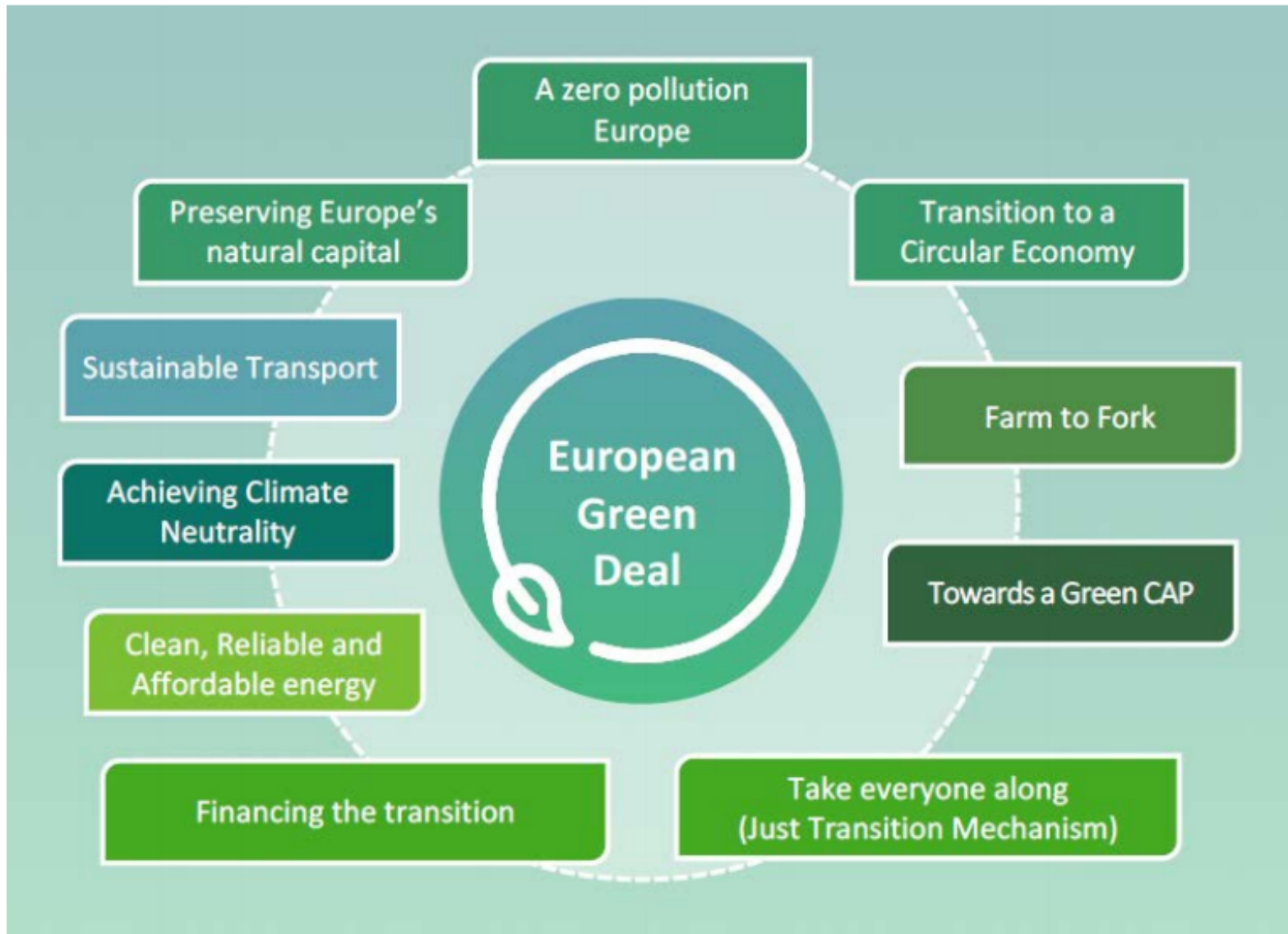
Thanks to the WG CoE Ana Luengo, Michael .Oldham, Carlo Bruschi ; Niek Hazendonk, Herman van den Bosche Leor Lovinger, Indra Purs.

3. IFLA Europe Vision and Mission 2019-2021

- Sustainable and ecologic transition: more environmental aspect of IFLA Europe's Mission and Vision;
- Be in line with the EU policy Green Deal- show role of the Landscape architects in sustainable growth.



Role of the Landscape Architects



4) Actions

The role of IFLA EUROPE helping other associations to act

GA in Antalya, we did hear delegates asking IFLA EUROPE to help better IFLA Africa and IFLA Middle East in their development.

-To aligne with the proposal of the Swedish association to share the organisation with Kenya to organise the IFLA WORLD GA in some years we act in same way:

-The Med Net group started in the European countries that can in develop over to the other borders of the Mediterranean.

- IFLA EUROPE would like to set up a IFLA EUROPE LANDSCAPE ACHITECT ADVISORY SUPPORT (name to be found)– Landscape architect advisors that can join local Landscape Architects to built up their cultural and ecologic landscapes after terrible damages, natural , terror, war or accidental crises.
Lebanon action

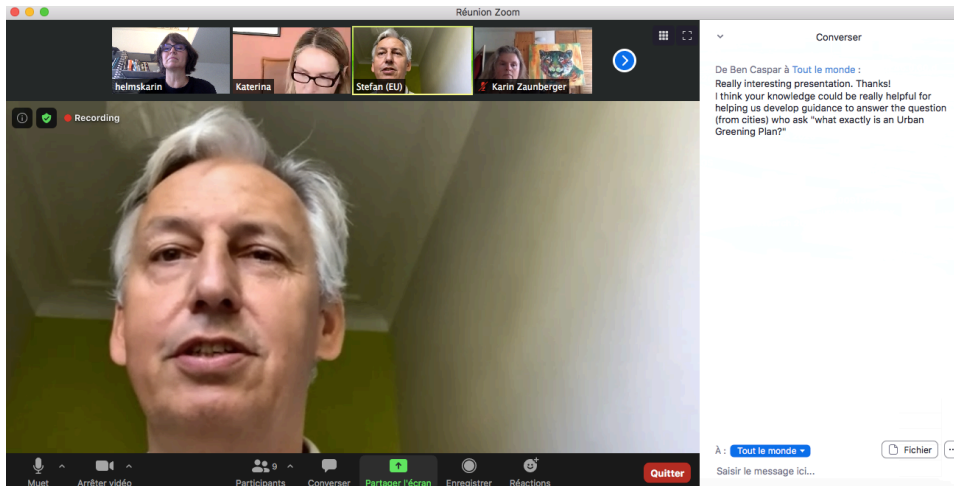
5. IFLA Europe: Visibility of the Profession at EU level

Promote the profession and show that **through Design Landscape Architects** can contribute not only to promote, facilitate EU policies « Green deal » but also be enablers of new modes of actions with/ for the locals

September 17th and 18th 2020

Meetings with DG Environment **Mr Stefan Leiner, Director, DG Env.**

Meeting with DG Climate **Dr Artur Runge-Metzger, Director, DG CLIMA.3**



Converser

De Ben Caspar à Tout le monde : 12:12 PM
Really interesting presentation. Thanks!
I think your knowledge could be really helpful for helping us develop guidance to answer the question (from cities) who ask "what exactly is an Urban Greening Plan?"

De Ben Caspar à Tout le monde : 12:17 PM
I think we also need to steer the drive to plant billions of trees (many of which will be in urban and peri-urban areas) such that we do it WELL - such that is provides multiple benefits for climate mitigation and adaptation,, biodiversity, quality of life in cities etc.

The role of Landscape Architects in the sustainable design

Urbancows project in Pärnu, Raili Hurt (architect), Siim Randmäe (structural engineer)

coastal meadow nature reserve



Picture from IFLA EUROPE Year book and exposition

The role of Landscape Architects in the sustainable design

connecting city and nature

Park Lingezegen, Berdie Olthof and Nanne Bouma (Feddes | Olthof Landschapsarchitecten - Masterplan and De Woerdt); Jeroen Bosch and Tim de Weerd (Veenenbos en Bosch Landschapsarchitecten - Het Waterrijk); Abe Veenstra Landschapsarchitect - De Park; Astrid Harsveld



IFLA EUROPE
INTERNATIONAL FEDERATION
OF LANDSCAPE ARCHITECTS

Working with IFLA World on joint policies

Landscape architect profession International Labour Organisation (ILO) IFLA WORLD- IFLA REGIONS

Old definition....

2162: Landscape architects Landscape architects plan and design landscapes and open spaces for projects such as, parks, schools, institutions, roads, external areas for commercial, industrial and residential sites, and plan and monitor their construction, maintenance, management and rehabilitation.

New definition and how we evolved and how much the profession has gained...

*2162: Landscape Architects plan, design and **manage natural, rural and built environments**, applying aesthetic and scientific principles to address the sustainability, quality and health of landscapes, **collective memory, heritage and culture, and territorial justice**. By leading and coordinating other disciplines, landscape architects deal with the interactions between natural and cultural ecosystems, such as adaptation and mitigation related to **climate change and the stability of ecosystems, socio-economic improvements**, and community health and welfare to create places that anticipate social and economic well-being.*

6. Raising the profile of the profession, regulation of the profession at national level and work towards automatic profession recognition at EU level

A long and difficult process but still our aim

It is needed in Europe there are difficulties of mobility of the profession and difficulties for professionals to work

IFLA EUROPE support the National associations

Meeting with representatives of **Mr Martin Frohn**, Head of Unit, Regulation of Professions (DG GROW.DDG2.E5) and with **Mrs Sophie Weisswange**, Policy Officer (DG Internal Market, Industry, Entrepreneurship and SMEs)

17th of September 2020

Regulation of the profession

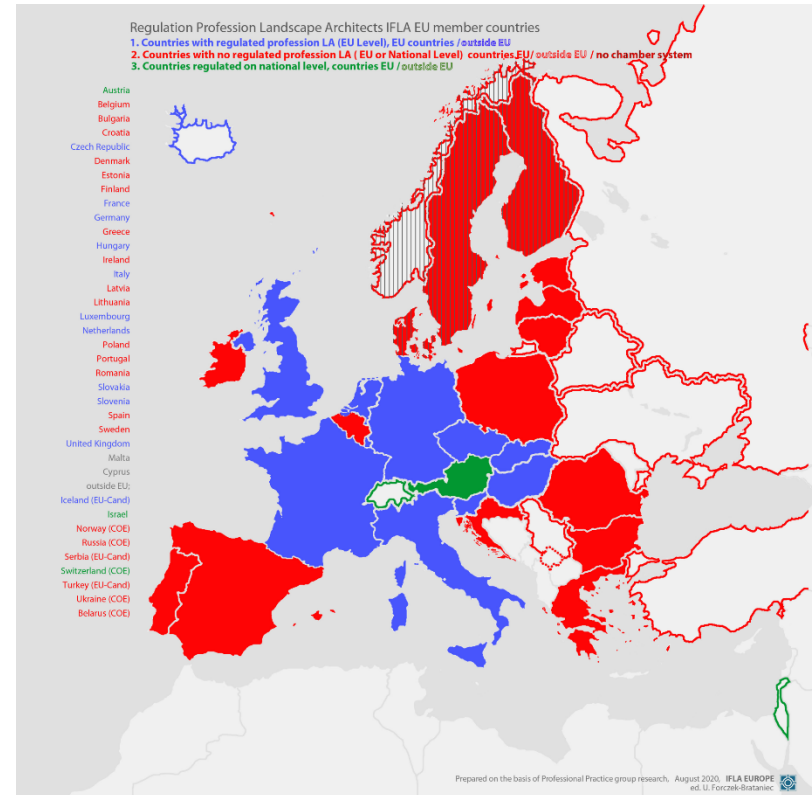
PRA Survey (Professional Recognition Assistance) launched in order to provide an up-to-date analysis of IFLA Europe members concerning the current state of the profession.

Regulated*

Not regulated

Regulated on the national level

* EC Database of Regulated Professions



7. Landscape Architecture education Actions

- IFLA EUROPE School Recognition Panel (SRP)

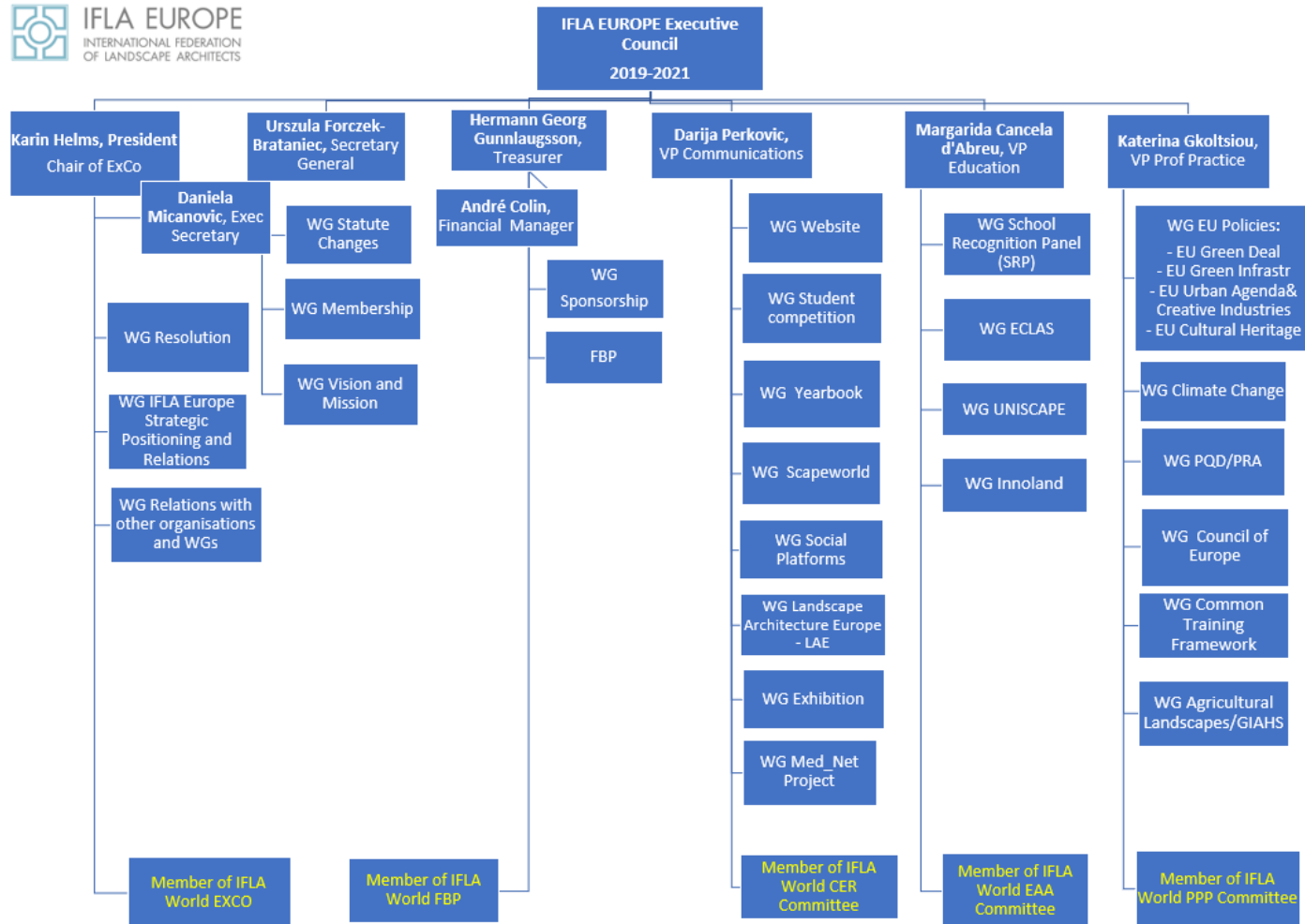
IFLA Europe accreditation covers **108** schools in Europe and a total of **230** programs. List of IFLA EUROPE recognised programmes and schools available on IFLA Europe website

Set up the frame and common standards of the higher education with IFLA WORLD and ECLAS

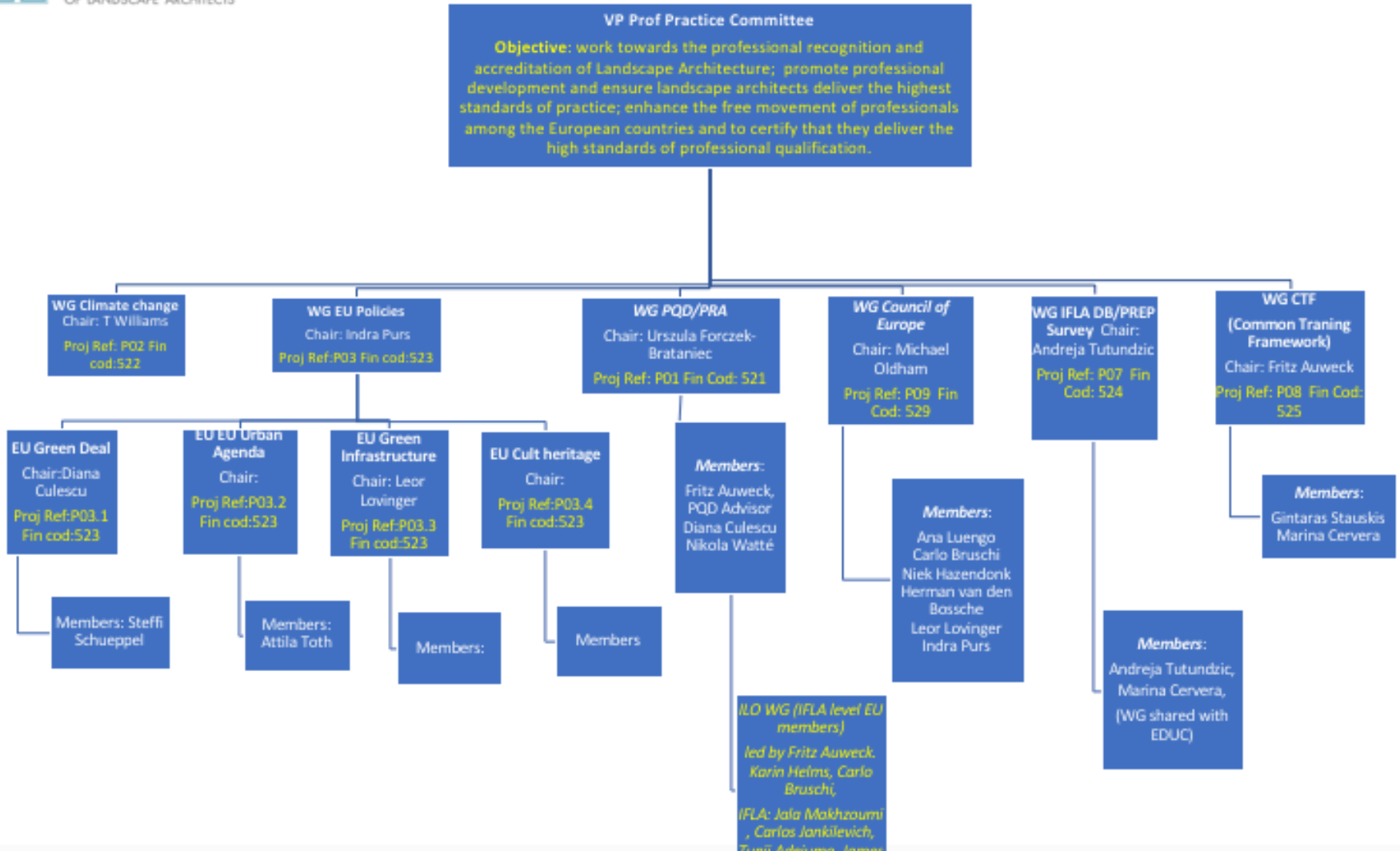
- **Common Training Framework** – IFLA Europe joints Erasmus+ Project InnoLAND

The **objective** of INNOLAND project is to facilitate transparency and recognition of skills and qualifications of landscape architecture professionals in the EU by developing the **Common Training Framework for Landscape Architecture** Profession along with relevant tools to support its implementation.

8. TO ENABLE ACTIONS: IFLA Europe STRUCTURE REVISED – THANKS TO THE DELEGATES



TUNING UP: IFLA Europe STRUCTURE REVISED - CALL TO THE DELEGATES



To enable actions

Further developing of our structures – Amendment to IFLA Europe Statutes

“Observer “

It was decided to merge
the “Affiliate” and “Corporate” members and create a new category

Article 3.6 – OBSERVERS

- • *new text*

3.6 - Observers – Observers shall be national or multi-national associations of landscape architects as well scientific, educational and professional institutions, associations or corporations connected with landscape architecture, and/or professional, commercial or industrial organisations wishing to promote or support the objectives of IFLA EUROPE.

Observers can attend, at their own expense, all promotional events, seminars, lectures and open parts of General Assemblies.

Observers cannot be admitted as Effective or Interim members, shall not have the status of members of IFLA Europe and will not be allowed to ask for any membership certification, shall have no rights to participate in its proceedings shall have no voting rights and will not be eligible to stand for or be elected to the Executive Council.

To enable actions- Closer link to European organisations

CoE Council of Europe – NGO – Status as Observer

ECLAS European Council of Landscape Architecture Schools

ELCA European Landscape Contractors Association

ACE The Architects' Council of Europe

CDCPP CoE Steering Committee for Culture, Heritage and Landscape

ECTP-CEU European Council of Spatial Planners

ICOMOS Europe

Europa Nostra Pan-European Federation for Cultural Heritage

UNISCAPE European Network of Universities for the implementation of the European Landscape Convention

CIVILSCAPE International Federation of 132 civil society organizations, public institutions dedicated to landscape architecture and the ELC



IFLA EUROPE
INTERNATIONAL FEDERATION
OF LANDSCAPE ARCHITECTS

9. Working with IFLA World on joint policies

- **IFLA World Business Plan 2019-2021, we aligned our organigram to contribute to IFLA World's actions**

- **FBP – Finance Business Plan , Membership Fees and Sponsorship to share and be more faire**

The calculations and fee structure as proposed are focused on regions other than Europe at present since IFLA Europe has own membership fee collection system and makes a single payment to IFLA World.

Detailed analysis and proposal of IFLA membership fees sent to IFLA World for consideration

- **Sponsorship, ongoing work**

Joint or similar IFLA World and IFLA Europe sponsorship policy – IFLA Europe is currently working on own Sponsorship Policy and is willing to work in this direction

10. Increasing visibility of IFLA Europe and the profession through Communication Strategy

- **Website** – new IFLA Europe website was launched in February 2020 www.iflaeurope.eu with links to IFLA World and IFLA Regions' websites.



[About Us](#) [Membership](#) [Communications](#) [Education](#) [Professional Practice](#) [IFLA Europe Projects](#) [News](#) [Support us](#) [Youth Competition](#)

Communications Committee

IFLA Europe - International Federation of Landscape Architects

- ***IFLA Europe Newsletter*** – IFLA Europe produces monthly newsletters with information/news from IFLA Europe, its members, IFLA World and Regions, partners and important organisations. All newsletters available on [IFLA Europe Newsletters](#).

- ***IFLA Europe Youth Competition 2020*** – Received 34 entries, announcement of winners on 20 September 2020 [IFLA Europe Youth Competition 2020](#)

- ***IFLA Europe Exhibition ‘Landscape as a Common Ground’*** - 61 exemplary projects from 24 National Associations of IFLA Europe [IFLA Europe Exhibition "Landscape as a Common Ground"](#)

- ***LAE – Landscape Architecture Europe***

- ***MoU with Barcelona Biennale***

- ***IFLA Europe Yearbook***

Yearbook is a collection of Pecha Kuchas - views, opinions, experiences that our National Associations have on annual General Assembly theme.

[2018 IFLA Europe Yearbook "Valuing Landscapes"](#)